

GOVERNMENT HIGH SCHOOL [NEELSANDRA]

YALAGONDA PALLYA

9TH STANDARD KSQAAC - 1

MODEL SCIENCE QUESTION PAPER

TIME : 1.30 MIN

SUBJECT: SCIENCE

MARKS: 40

40

ANSWER THE FOLLOWING :

1 x 18 = 18

1. Matter is made up of -----

a. Large particles b. Small particles c. Very small particles d. Very large particles

2. Solution is a homogenous mixture of ----- substances

a. two or more b. 1 and 3 c. 5 d. All.

3. Protein synthesized inside the cell -----

a. nucleus b. Chloroplast c. Endoplasmic reticulum d. Chromatin

4. xylem and phloem are types of -----

a. connective tissue b. Epithelium tissue c. Muscular tissue d. Complex tissue .

5. The acceleration of an object is the change in ----- per unit time

a. velocity b. Motion c. Acceleration d. Distance

6. Mass of 1 mole of a substance is called its -----

a. molar mass b. Velocity c. speed d. Density.

7. Short form of compressed natural gas is

a. PNG b. CNG c. CMG d. LPG

8. Short form of Liquid petroleum gas

a. PNG b. CNG c. CMG d. LPG

9. In Hospital often they use

- a. Oxygen cylinder b. CO₂ cylinder c. CO cylinder d. . CCl₄ cylinder

10. Polyatomic symbol of Sulphate is

- a. SO₄²⁻ b. SO₃²⁻ c. SO₂²⁻ d. SO₅²⁻

11. During a chemical reaction the sum of the masses of the reactants and products remains unchanged

This is

- a. Law of conservation of mass b. Newron's Ist Law c. Newron's 2nd Law d. Newron's IIIrd Law

12. the odometer of an automobile measure the distance travelled by

- a. an object b. A Light c. A Velocity d. All the three

13. Parenchyma Collenchymas Sclerenchyma are are -----type of tissues

- a. Simple b. Complex c. Compound d. None

14. the lipids and protein s constituting the cell membrane get synthesized in

Endoplasmic reticulum mitochondria

- a. mitochondria b. Nucleus c. Endoplasmic reticulum d. Endoplasmic reticulum mitochondria

15. If we convert 293k temperature in to Celsius scale it will be

- a. 20°C b. 21°C c. 22°C d. 23°C

16. The Avogadro constant 6.022×10^{23} is defined as the number of atoms in exactly 12 g of

- a. Carbon – 12 b. Oxygen – 12 c. Nitrogen – 12 d. Hydrogen – 12

17. A solution contains 40g of common salt in 320g of water . If we calculate the concentration in terms

Of mass by mass percentage of the solution will be

- a. 11.1% b. 1.11% c. 1.21% d. . 12.1%

18. ----- techniques is applied for the separation of oil from water.

- a. using separating funnel b. Filtration c. Centrifugation d. Evaporation

19. A stone of 1 kg is thrown with a velocity of 20 m/s per second across the frozen surface of a lake and comes to rest after travelling a distance of 50 m. What is the force of friction between the stone and the ice.

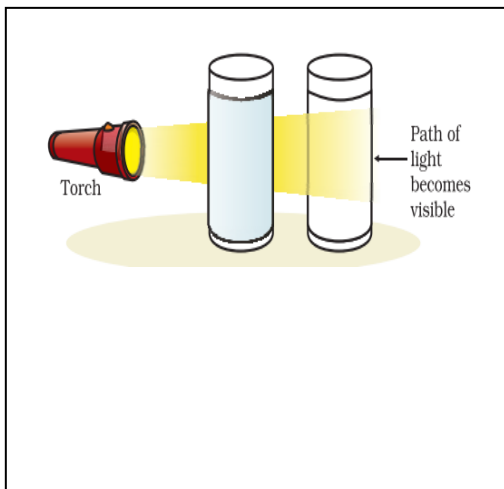
$$2 \times 6 = 12$$

- a. -4 ms^{-2} b. -40 ms^{-2} c. -140 ms^{-2} d. -240 ms^{-2}

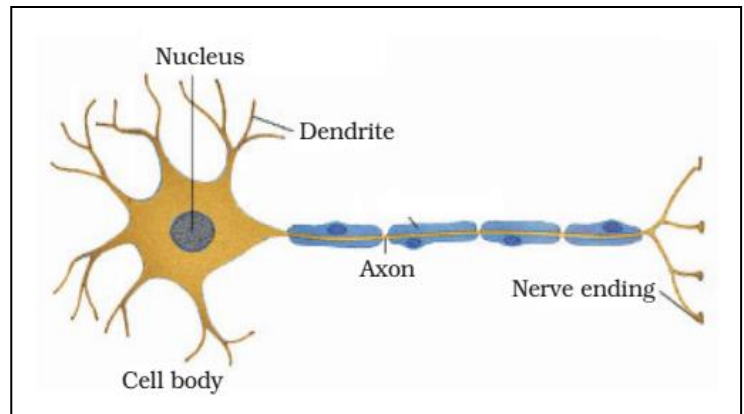
20. Calculate the mass of 0.5 mole N_2 gas [mass from mole of molecule]

- a. 14g b. 15g c. 25g d. 10g

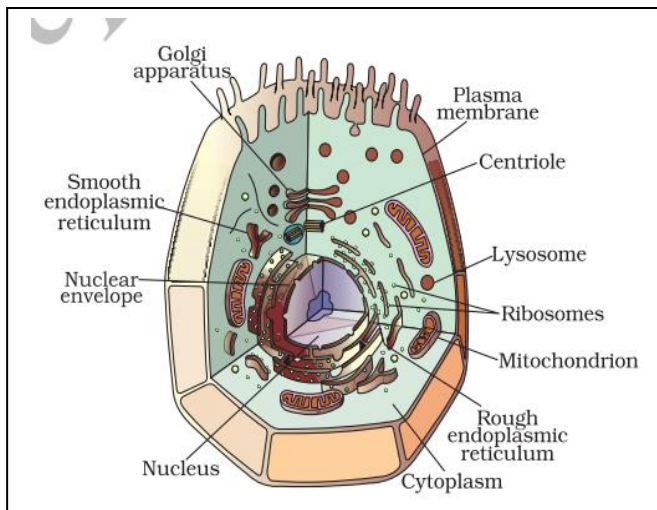
21. In the given figure write the orders of the name



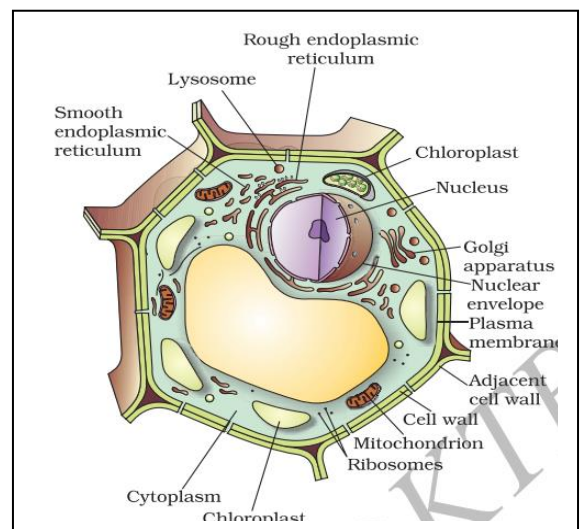
[a]



[b]



[c]



[d]

A	B	C	D
[1] animal cell	[1] plant cell	[1] neuron	[1] Tindal effect
[2] plant cell	[2] neuron	[2]Tindal effect	[2] neuron
[3] neuron	[3] Tindal effect	[3] animal cell	[3] Animal cell
[4] Tindal effect	[4] Animal cel	[4] plant cell	[4] Plant cell

22. An object weights 10N when measured on the surface of the earth. What would

Be its weight when measured on the surface of the moon ?

- a. 1.67 N b. 1.67 ms⁻² c. 16.7 N b. 16.7 ms⁻²

23. An artificial satellite is moving in a circular orbit of radius 42250 km . Calculate its speed if it takes 24 hrs to revolve around the earth .

- a. 3073 . 74 ms⁻¹ . b. 3073 7. 4 ms⁻¹ . c. 30.734 ms⁻¹ d. 307.3 7 4 ms⁻¹

24. A motorcar is moving with a velocity of 108 km/h and it takes 4s tpo stop after the brakes

Are applied. Calculate the force exerted by the brakes on the motorcar if its mass along

With the passengers is 1000 kg.

- a. - 7500 N b. +7500 N c. - 750N d. + 750N

2.The Chemical formulae of Magnesium chloride, Calcium oxide Copper nitrate Aluminium chloride

Are

- | | | | | | | | |
|----|---|----|--|---|---|--|--|
| A. | 1.MgCl ₂
2. Cao
3.Cu(NO ₃) ₂
4.AlCl ₃ | B. | 1.MgCl ₂
2. AlCl ₃
3.Cu(NO ₃) ₂
4. Cao | C | 1.MgCl ₂
2.Cu(NO ₃) ₂
3. Cao
4.AlCl ₃ | | 1. Cao
2. MgCl ₂
3.Cu(NO ₃) ₂
4.AlCl ₃ |
|----|---|----|--|---|---|--|--|

BY; S.A.S.

GOVERNMENT HIGH SCHOOL - YALAGONDAPALYA [NEELSANDRA]